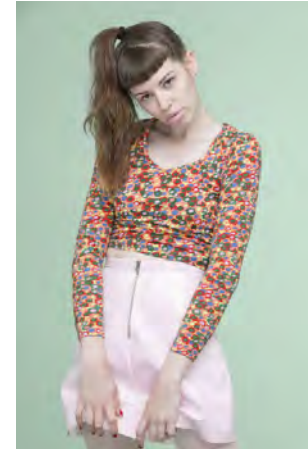


EVERYDAY PEOPLE

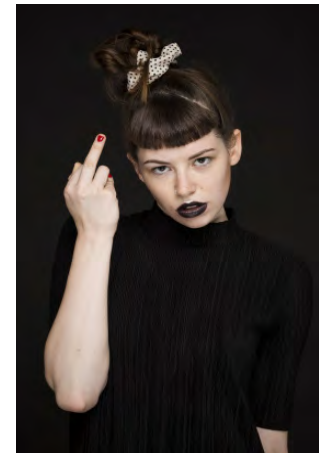


LISA-MARIE K.

Geburtsjahr 1995
Größe 1,72
Konfektion 34-36
Haare braun
Augen braun
Schuhe 38

Besonderheiten
Tattoos
Sommersprossen

Booking Base Frankfurt a.M.



W everydaypeople.de

M hello@everydaypeople.de