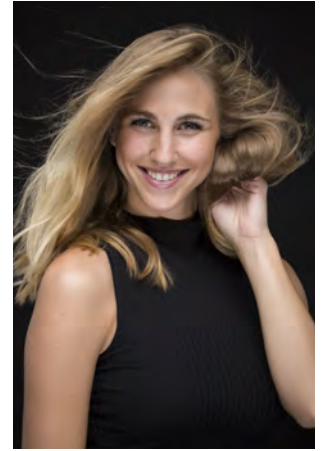
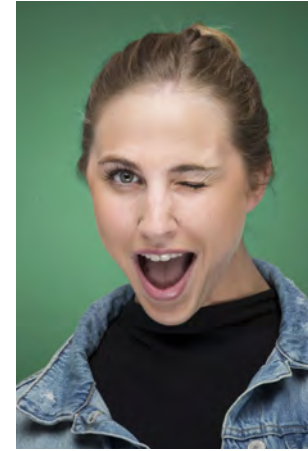
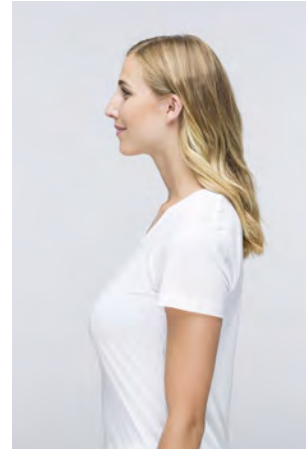


# EVERYDAY PEOPLE

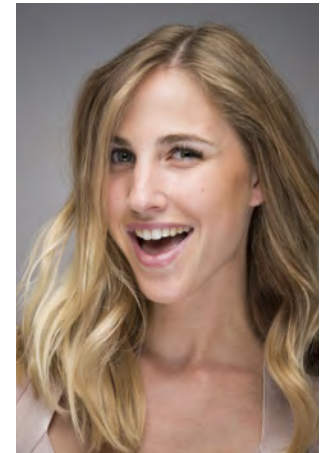


RACHEL T.

Geburtsjahr 1992  
Größe 1,70  
Konfektion 34-36  
Haare blond  
Augen grün  
Schuhe 39

Booking Base Düsseldorf

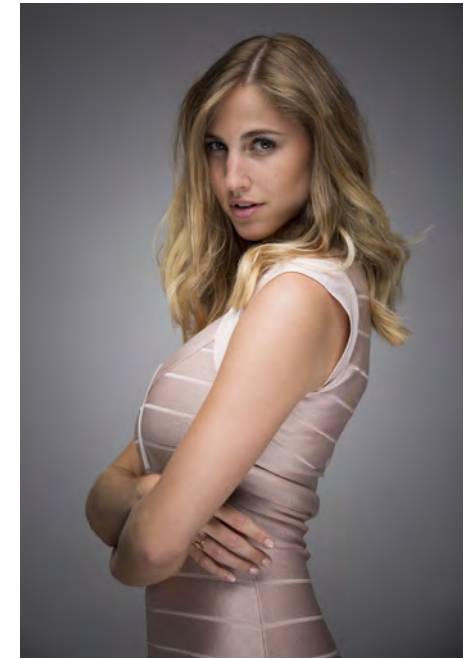
Besonderheiten  
sportlich



W [everydaypeople.de](http://everydaypeople.de)

M [hello@everydaypeople.de](mailto:hello@everydaypeople.de)

# EVERYDAY PEOPLE



RACHEL T.

Geburtsjahr 1992  
Größe 1,70  
Konfektion 34-36  
Haare blond  
Augen grün  
Schuhe 39

Booking Base Düsseldorf

Besonderheiten  
sportlich

W [everydaypeople.de](http://everydaypeople.de)  
M [hello@everydaypeople.de](mailto:hello@everydaypeople.de)

