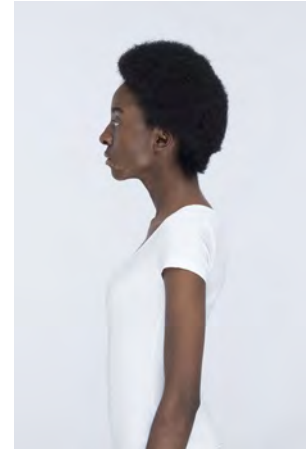


EVERYDAY PEOPLE

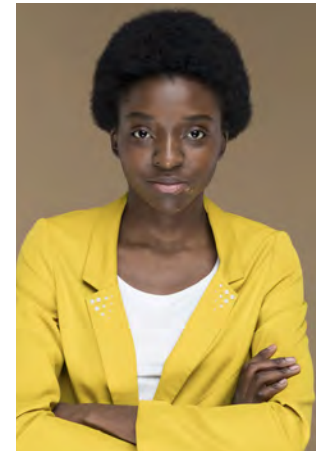


WHITNEY K.

Geburtsjahr 1996
Größe 1,79
Konfektion 34-36
Haare schwarz
Augen dunkelbraun
Schuhe 41

Besonderheiten
Afro, Vitiligo (am Mund)

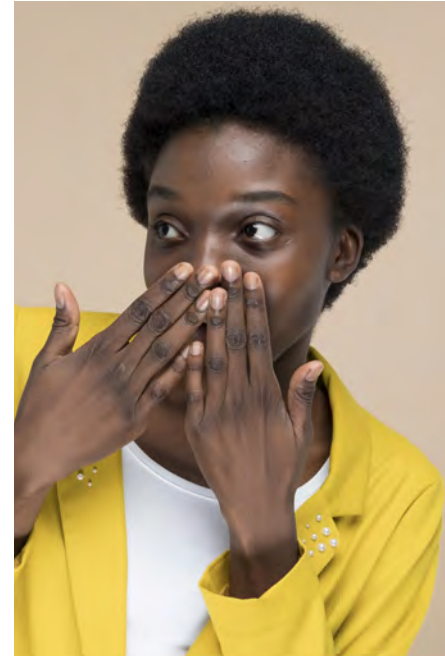
Booking Base Köln/Aachen



W everydaypeople.de

M hello@everydaypeople.de

EVERYDAY PEOPLE



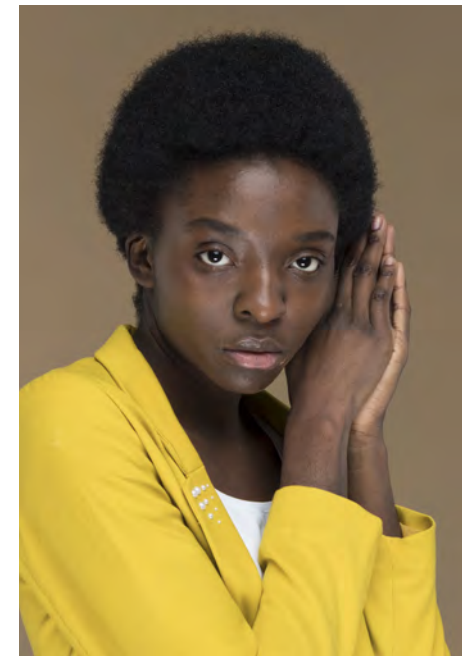
WHITNEY K.

Geburtsjahr 1996
Größe 1,79
Konfektion 34-36
Haare schwarz
Augen dunkelbraun
Schuhe 41

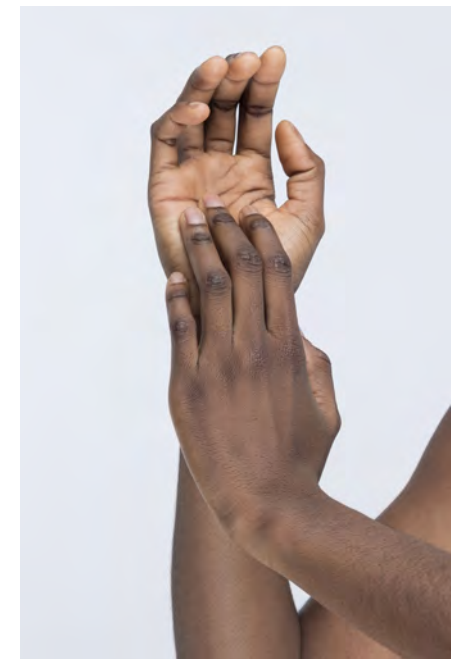
Besonderheiten
Afro, Vitiligo (am Mund)

Booking Base Köln/Aachen

W everydaypeople.de
M hello@everydaypeople.de



EVERYDAY PEOPLE



WHITNEY K.

Geburtsjahr 1996
Größe 1,79
Konfektion 34-36
Haare schwarz
Augen dunkelbraun
Schuhe 41

Besonderheiten
Afro, Vitiligo (am Mund)

Booking Base Köln/Aachen



W everydaypeople.de
M hello@everydaypeople.de