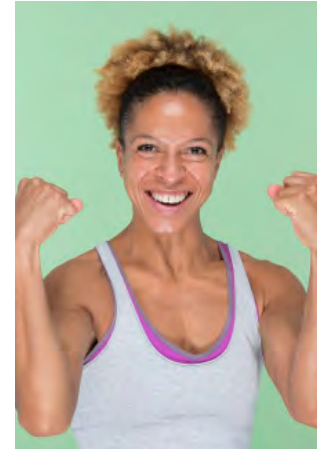
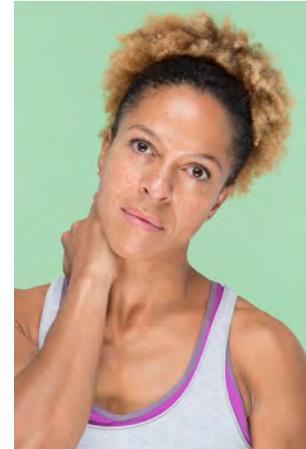


# EVERYDAY PEOPLE

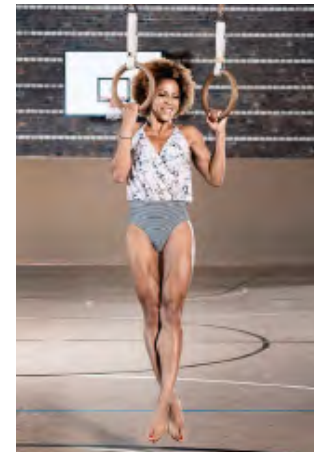


NATHALIE H.

Geburtsjahr 1979  
Größe 1,60  
Konfektion 34-36  
Haare braun  
Augen braun  
Schuhe 39

Besonderheiten  
Sommersprossen, Sportlerin  
(Personal Trainer, Yoga)

Booking Base Leverkusen



W [everydaypeople.de](http://everydaypeople.de)

M [hello@everydaypeople.de](mailto:hello@everydaypeople.de)