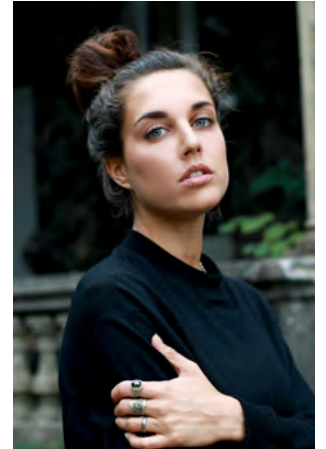
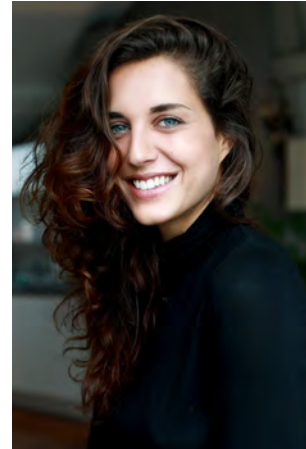


EVERYDAY
PEOPLE



NADINE V.

Geburtsjahr 1990

Größe 1,74

Konfektion 38

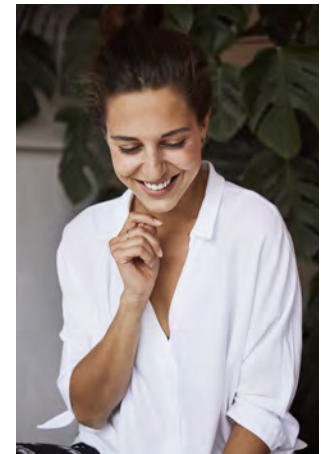
Haare braun

Augen blau-grün

Schuhe 40

Besonderheiten
sportlich (Yoga, Laufen)

Booking Base Berlin



W everydaypeople.de

M hello@everydaypeople.de