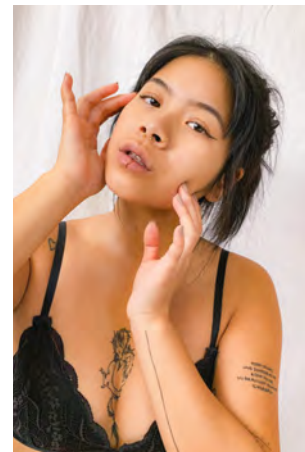


EVERYDAY PEOPLE

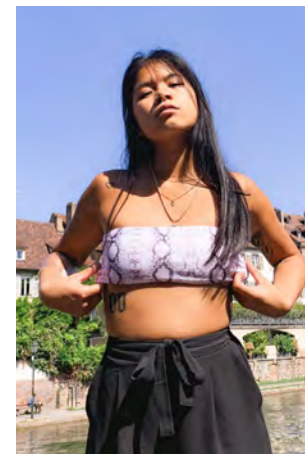


JANE L.

Geburtsjahr 2000
Größe 1,59
Konfektion 34
Haare dunkelbraun-schwarz
Augen dunkelbraun
Schuhe 36

Besonderheiten
Tattoos, Piercings
sportlich (Fitness, Tanzen)

Booking Base Stuttgart



W everydaypeople.de

M hello@everydaypeople.de