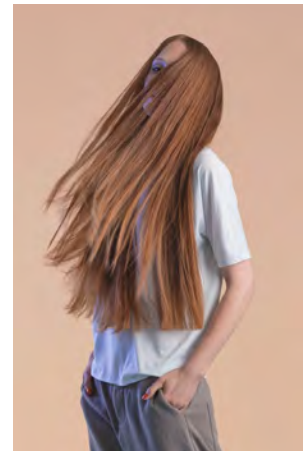
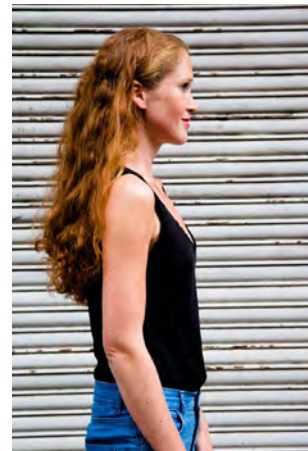


# EVERYDAY PEOPLE

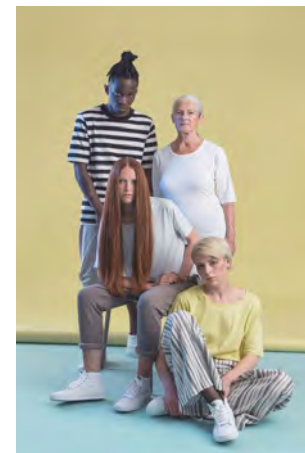


CAROLINE W.

Geburtsjahr 1987  
Größe 1,73  
Konfektion 36  
Haare rot  
Augen grün-blau  
Schuhe 40

Besonderheiten  
Sommersprossen

Booking Base Köln



W [everydaypeople.de](http://everydaypeople.de)

M [hello@everydaypeople.de](mailto:hello@everydaypeople.de)