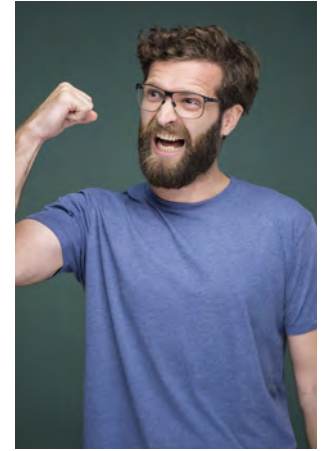
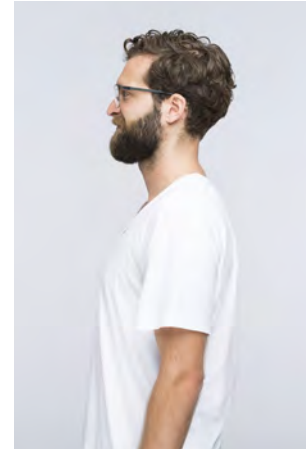


# EVERYDAY PEOPLE

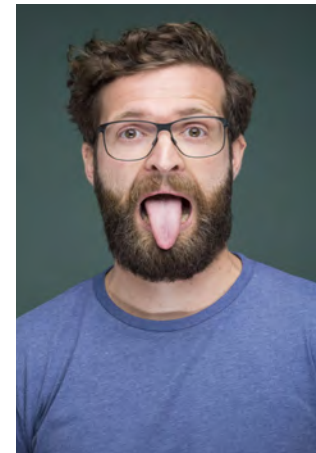


MORITZ A.

Geburtsjahr 1982  
Größe 1,86  
Konfektion 50-52  
Haare braun  
Augen grün-braun  
Schuhe 43

Booking Base Köln

Besonderheiten  
Bart, Brille  
sportlich



W [everydaypeople.de](http://everydaypeople.de)

M [hello@everydaypeople.de](mailto:hello@everydaypeople.de)