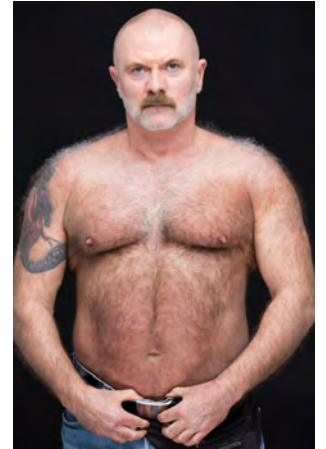
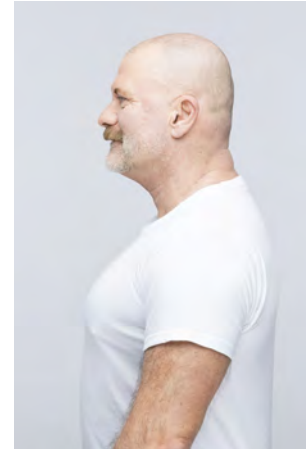


EVERYDAY PEOPLE

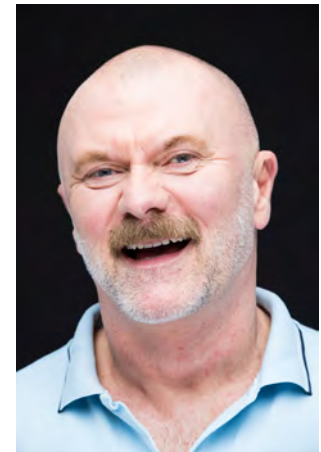


FRANK B.

Geburtsjahr 1961
Größe 1,82
Konfektion 54-56
Haare grau
Augen blau
Schuhe 38

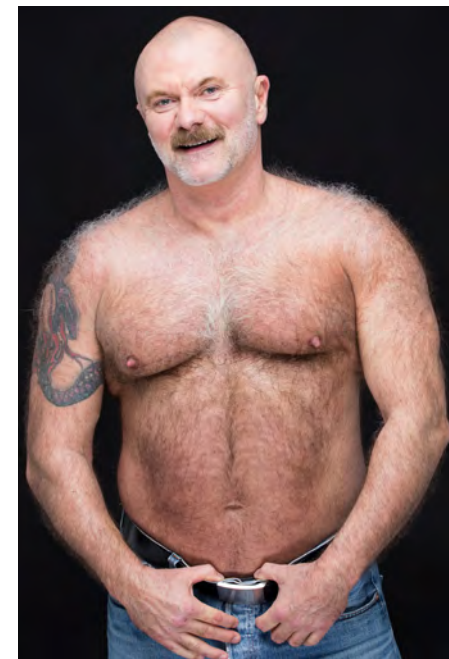
Besonderheiten
sportlich (Fitnesstrainer,
Ski + Tennis)
Tattoos

Booking Base Köln



W everydaypeople.de
M hello@everydaypeople.de

EVERYDAY PEOPLE



FRANK B.

Geburtsjahr 1961
Größe 1,82
Konfektion 54-56
Haare grau
Augen blau
Schuhe 38

Besonderheiten
sportlich (Fitnesstrainer,
Ski + Tennis)
Tattoos

Booking Base Köln

W everydaypeople.de
M hello@everydaypeople.de

