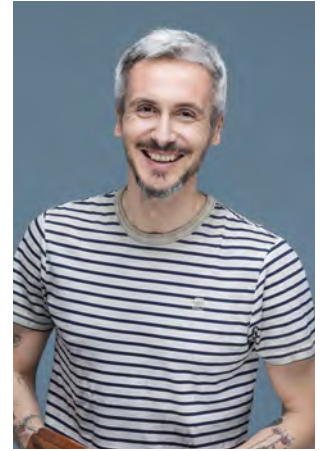
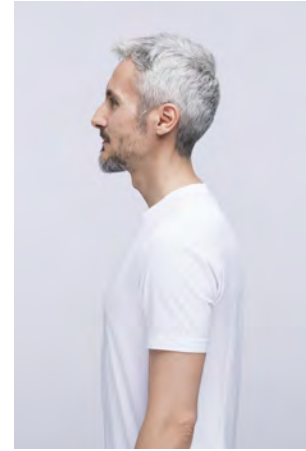


EVERYDAY PEOPLE

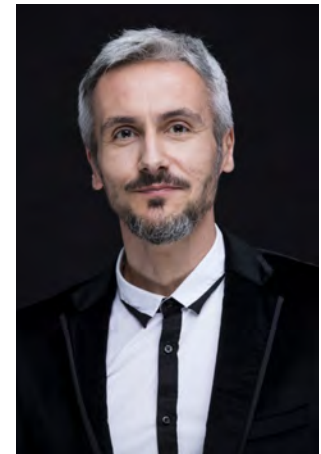


ANDREY D.

Geburtsjahr 1976
Größe 1,82
Konfektion 48
Haare grau
Augen hellbraun
Schuhe 44

Besonderheiten
Tattoos
Bart
Brille

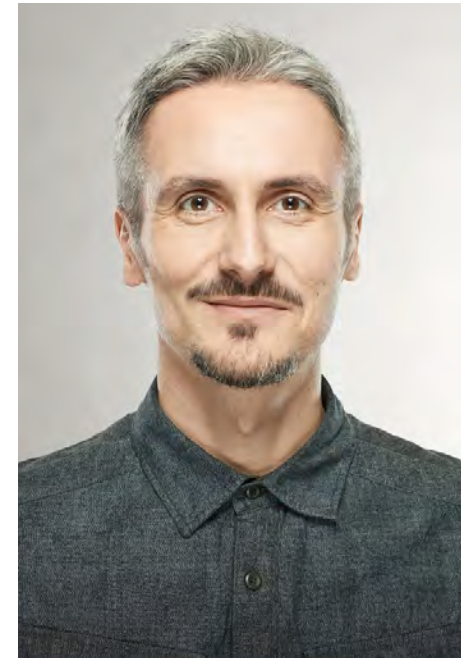
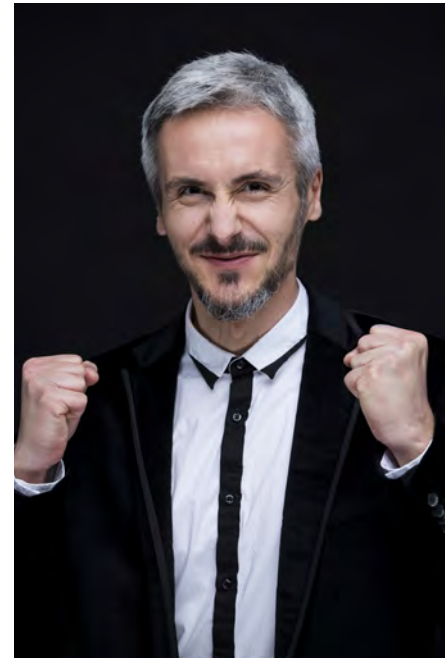
Booking Base Münster



W everydaypeople.de

M hello@everydaypeople.de

EVERYDAY PEOPLE



ANDREY D.

Geburtsjahr 1976
Größe 1,82
Konfektion 48
Haare grau
Augen hellbraun
Schuhe 44

Besonderheiten
Tattoos
Bart
Brille

Booking Base Münster

W everydaypeople.de
M hello@everydaypeople.de

